



19 - A - D - 1
GULBERG 3, LAHORE

Welcome to GULBERG GROVE

Located in the heart of Gulberg III,
Lahore's most prestigious living destination under
development by Liberty Condominiums and designed by
accomplished architect Mr. Omar Hassan of Oh + A design
works.



Boasting modern architecture, state of the art facilities and a host of amenities, Gulberg Grove offers its residents every luxury and complete peace of mind.



An oasis of tranquility in the centre of a bustling city,



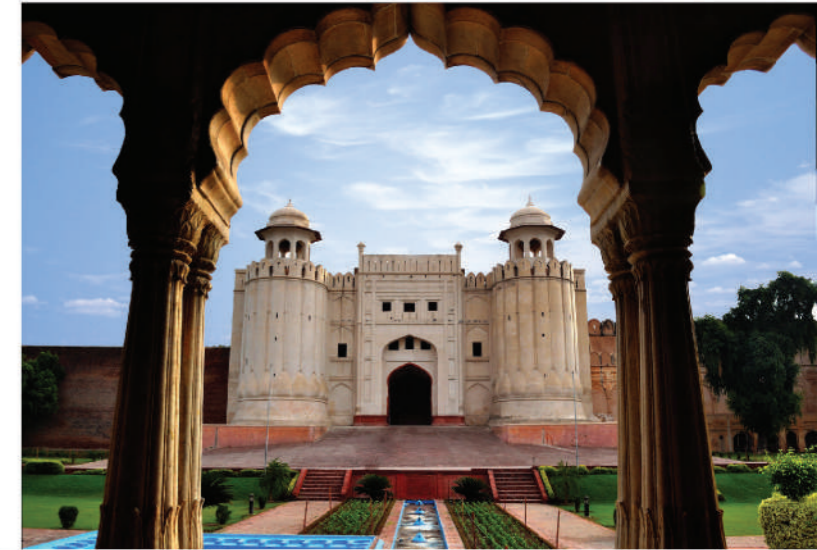
Lahore

The Majestic City



Lahore is one of the fastest growing cities in Pakistan. Lahore in general and its city centre, Gulberg, provides the ultimate urban lifestyle. It offers the best of the old and the new.

With ever improving infrastructure and amenities, Lahore's real estate continues to show strong growth. The demand for apartments in particular is on the rise with demand exceeding supply.



“Lahore ... home to nearly as many people as New York, layered like a sedimentary plain with the accreted history of invaders from the Aryans to the Mongols to the British”
- **Mohsin Hamid**



“One who has not visited Lahore has not lived yet”
- **Punjabi Proverb**

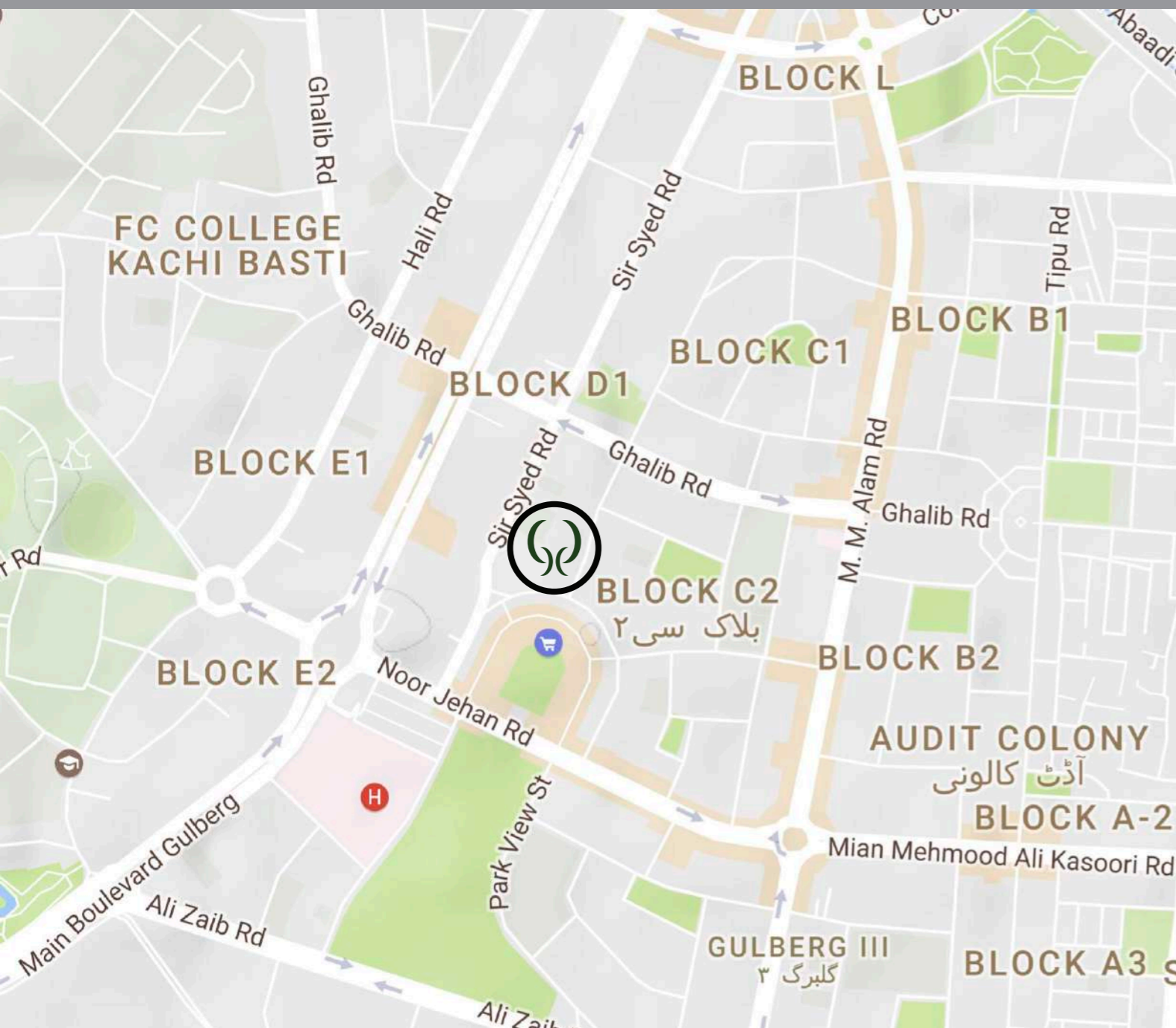


The Mughal and Sikh legacy survives in the Lahore Fort, Badshahi Mosque and Gurdwara, the Mall is lined with colonial-gothic buildings from the British Raj, and the suburbs of Gulberg and Cantt feature palatial mansions and trendy shopping districts.

As the capital of Punjab the city has known ages of cultural, intellectual, musical and literary evolution, which has consequently led to the fermentation of this rich brew we call Lahore.



The Neighbourhood



Nestled in a quiet street behind the iconic shopping area of Liberty, Gulberg Grove has easy access from both the signal free corridor of Main Boulevard and Lahore's premier shopping and eating destination, MM Alam Road.

It is just a few minutes drive from the best schools, shops, eateries, hospitals and necessities of life.

Education:

Lahore School Of Economics
Beaconhouse School System
Lahore Grammar School, 1-A-1
Gymboree

Shopping:

Liberty
Gulberg Galleria
Vogue Towers
Pace Mall
Mall One
Xinhua Mall

Fine Dining:

Aylanto
Pompeii
Lahore Social
Cosa Nostra

Health & Wellness:

Al Razi Healthcare
Medical Centre Dental Practice
Sukh Chan Wellness Club
Hamid Latif Hospital
United Christian Hospital



GULBERG GROVE *Clubhouse*

A first of its kind lower ground that will not only serve as the entrance to the complex but will also house world class facilities just for its residents. An ultra-comfortable environment in which to relax, work and play.



GYM

A state of the art gymnasium with sauna and changing rooms.



POOL

An indoor swimming pool that can be used year round. Perfect for doing laps or escaping the city's summer sun.



A place to socialize with family, guests and neighbours. The lounge will offer delectable food and drinks to the residents.



A luxuriously comfortable 50 seat cinema/theatre that will be available for the residents.

THE LOUNGE AUDITORIUM/CINEMA

BANQUET HALL



A purpose built room for hosting a party, banquet, wedding or reception, or any other social event.

DAYCARE

A fully monitored play area/nursery for young kids.





The Accommodation



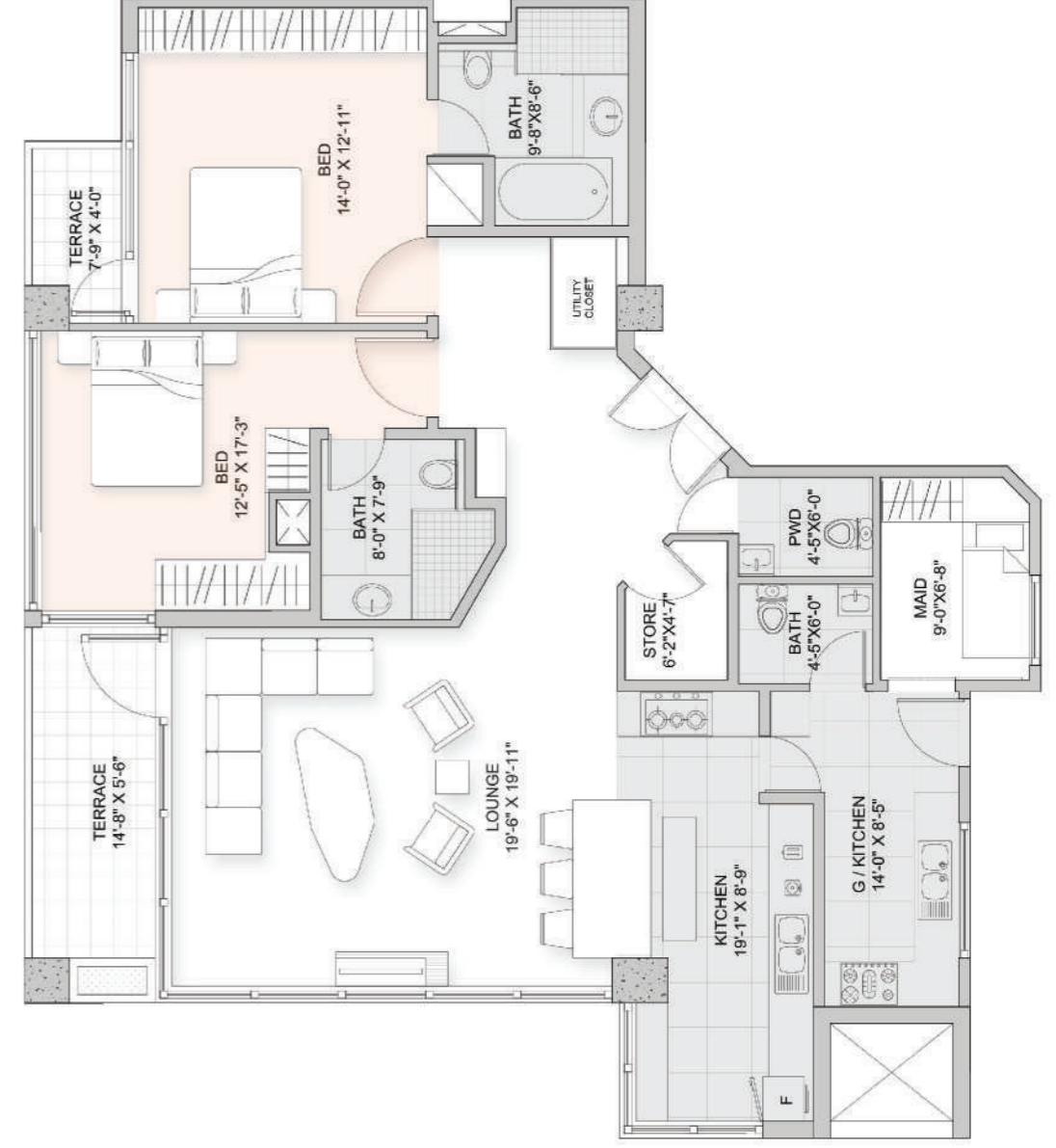
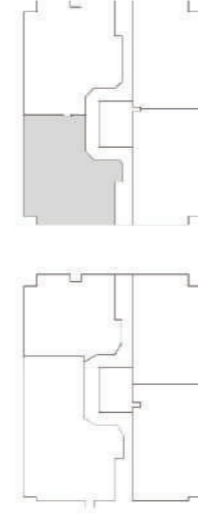
Spread over an area of 187,000 sq. ft, the apartments will be in two separate towers, classified as North and South, with seven floors each. Both towers will have 4 apartments with 3 Two bed apartments and 1 Three bed apartment.



Given the layout of the complex, each apartment is a corner apartment giving residents lots of natural light and panoramic views. The towers have been designed in a way to ensure maximum privacy and convenience for all apartment residents. Both towers will have three elevators and three stairways.

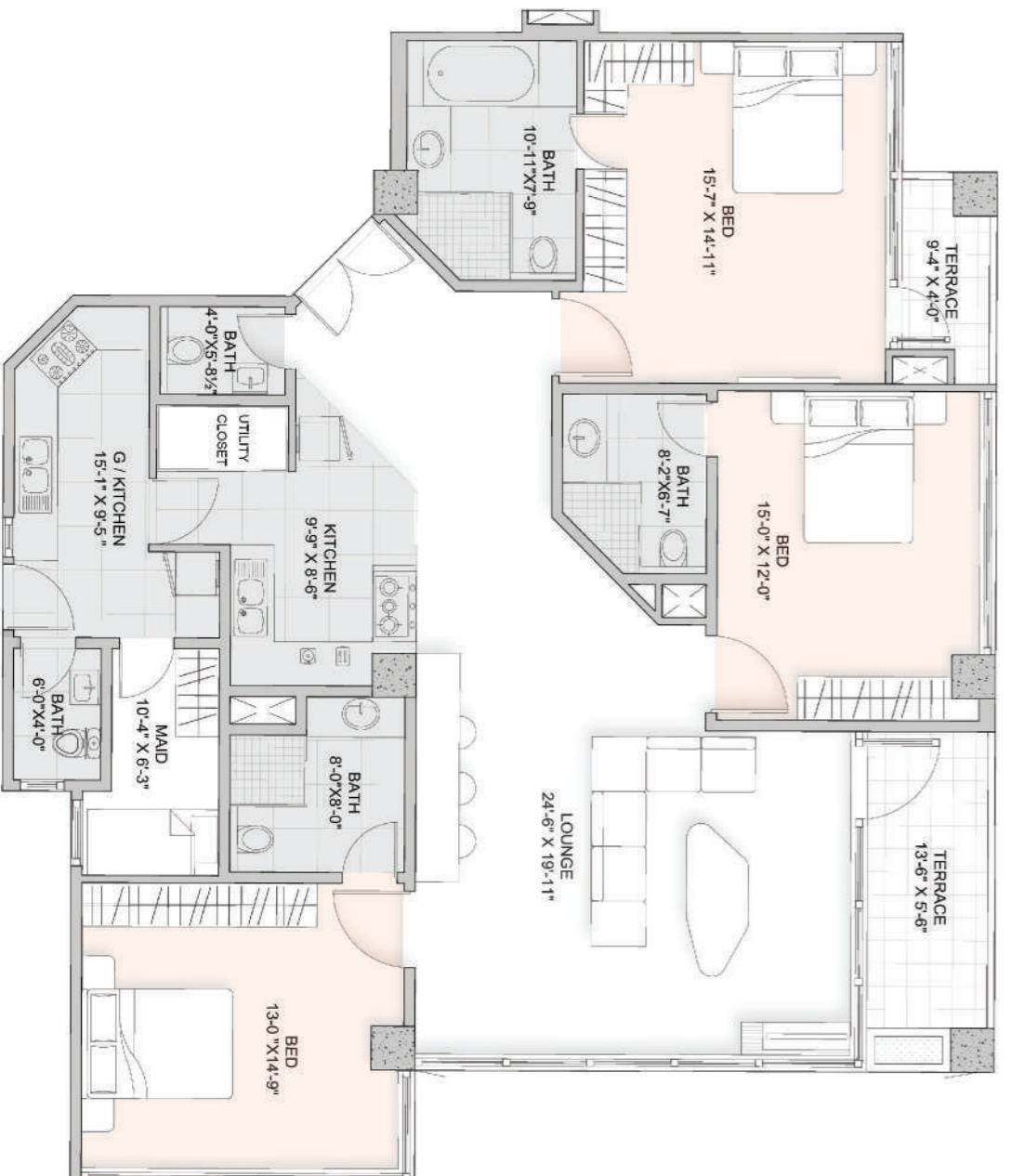


APARTMENT A - NORTH TOWER.
 AREA = 1556 SQ.FT
 2-Bed Apartment.

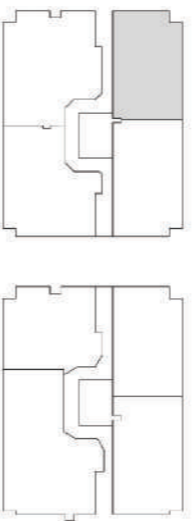


Apartment Composition.

- Two Bedroom en Suite.
- One Master With Private Terrace.
- Living Room With Dining And Sitting Areas.
- Fully Furnished Kitchen.
- Grease Kitchen.
- Powder Room.
- Maid's Room.
- Utility Closet For Washer/dryer.
- Study Room.
- Terrace.

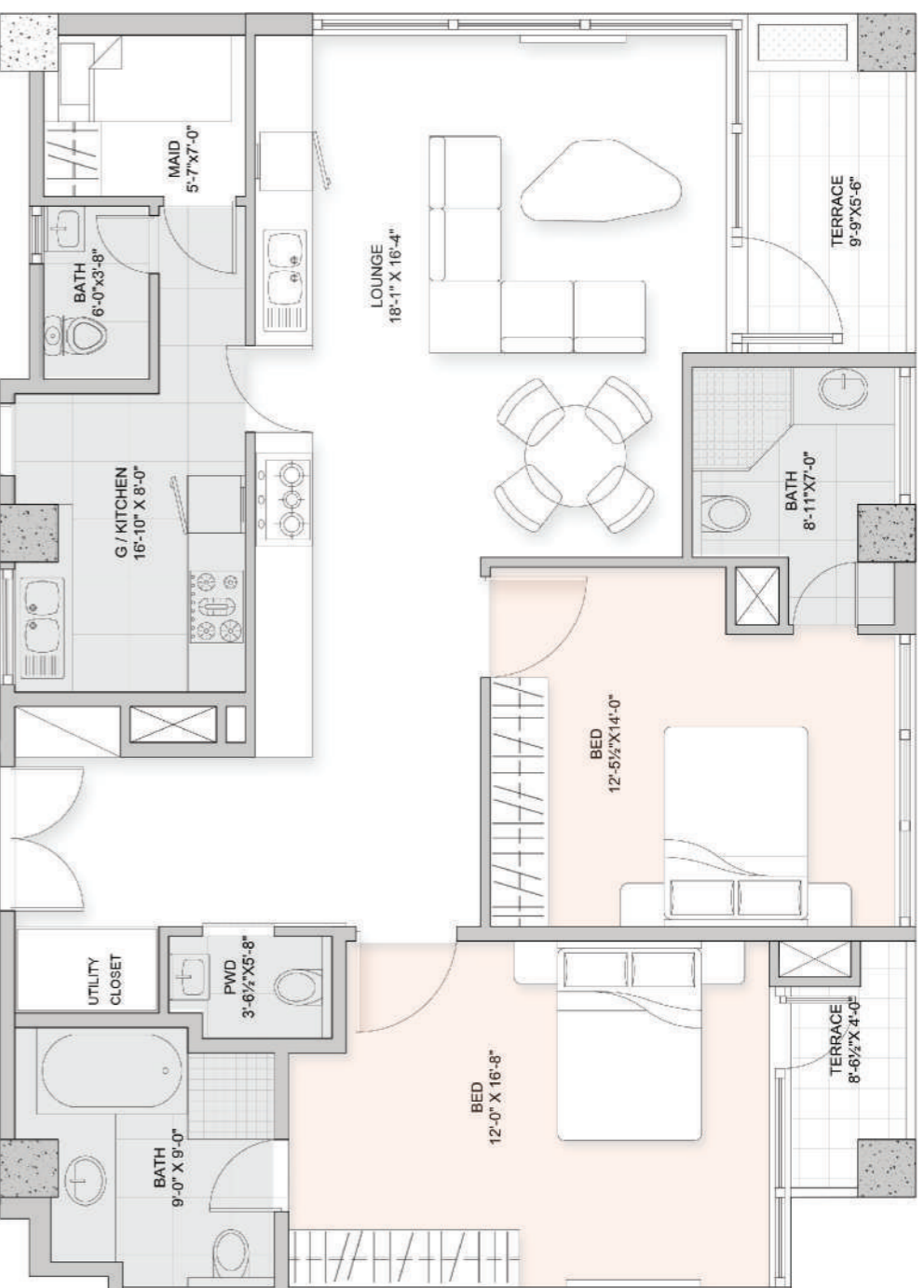


APARTMENT B - NORTH TOWER.
 AREA = 1960 SQ.FT
 3-Bed Apartment.

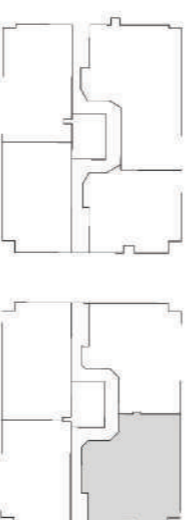


Apartment Composition.

- Two Bedroom en Suite.
- One Master With Private Terrace.
- Living Room With Dining And Sitting Areas.
- Fully Furnished Kitchen.
- Grease Kitchen.
- Powder Room.
- Maid's Room.
- Utility Closet For Washer/dryer.
- Terrace.



APARTMENT C - NORTH TOWER.
 AREA = 1383SQ.FT
 2-Bed Apartment.



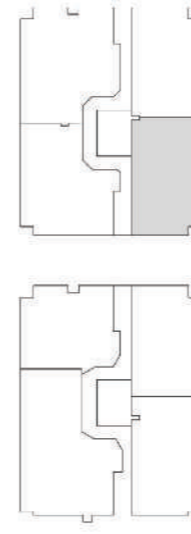
Apartment Composition.

- Three Bedroom en Suite.
- One Master With Private Terrace.
- Living Room With Dining And Sitting Areas.
- Fully Furnished Kitchen.
- Grease Kitchen.
- Powder Room.
- Maid's Room.
- Utility Closet For Washer/dryer.
- Mid-Sized Store Room.
- Terrace.

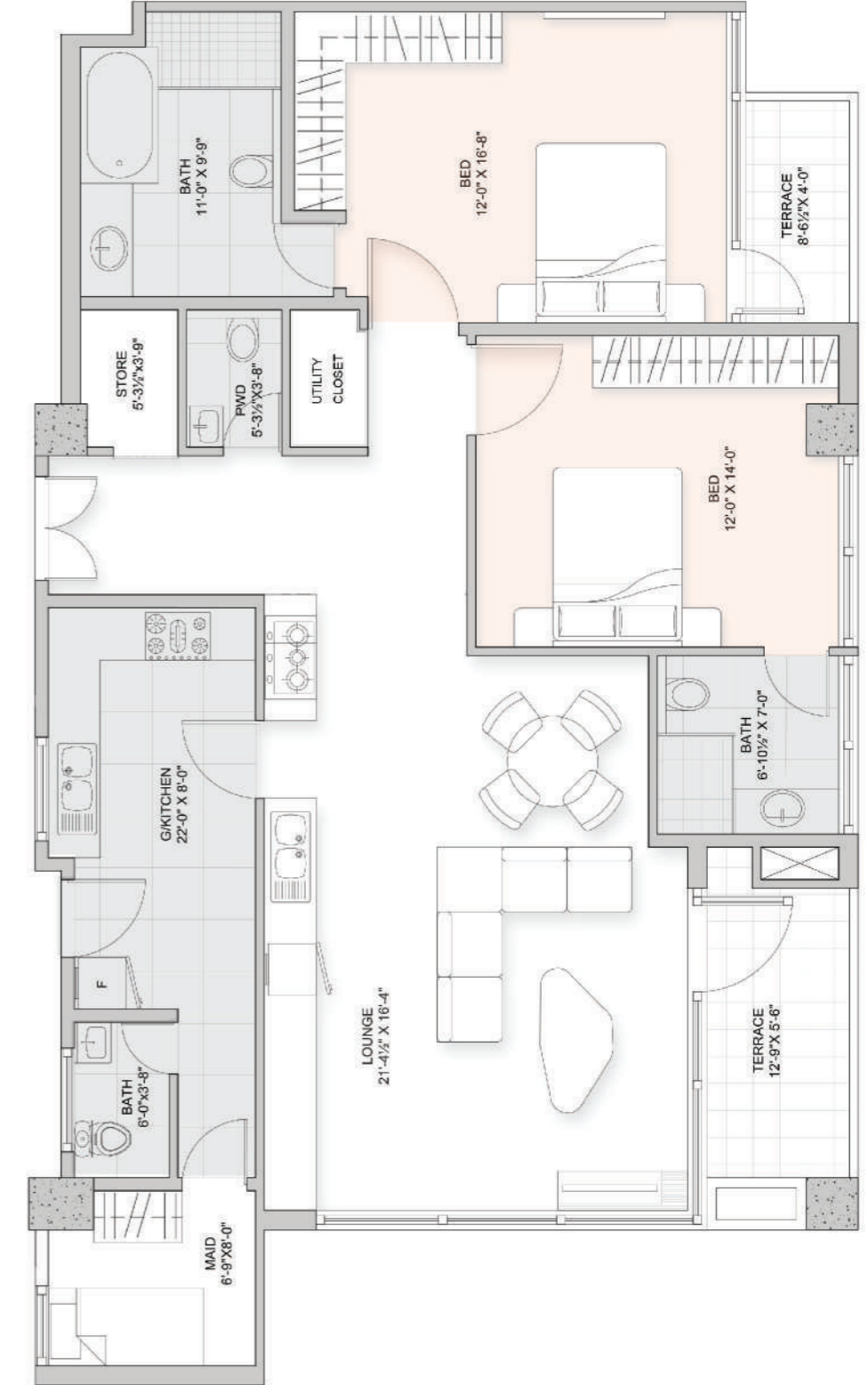


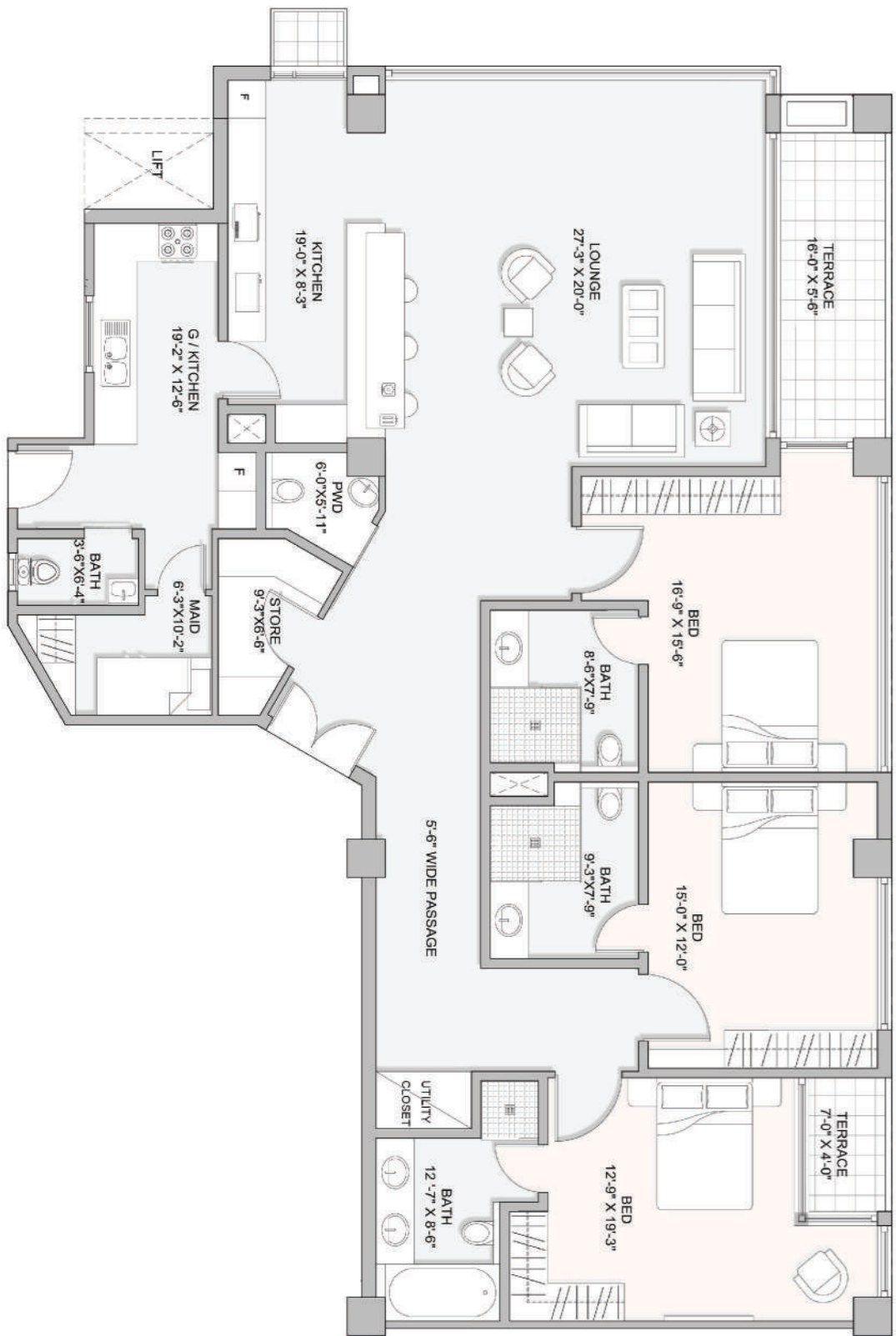
The apartments have been designed to have distinct living and entertainment areas. State of the art kitchens have been provided in addition to a grease kitchen. A maid's room has been allocated. Ample storage space and closet space has been accounted for along with a designated area for a washer/drier.

APARTMENT D - NORTH TOWER.
 AREA = 1635 SQ.FT
 2-Bed Apartment.



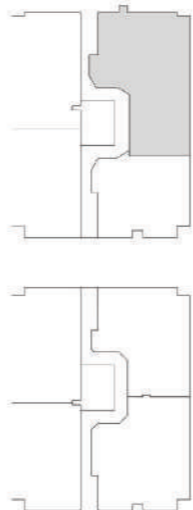
- Apartment Composition.**
- Two Bedroom en Suite.
 - One Master With Private Terrace.
 - Living Room With Dining And Sitting Areas.
 - Fully Furnished Kitchen.
 - Grease Kitchen.
 - Powder Room.
 - Maid's Room.
 - Utility Closet For Washer/dryer.
 - Mid-Sized Store Room.
 - Terrace.



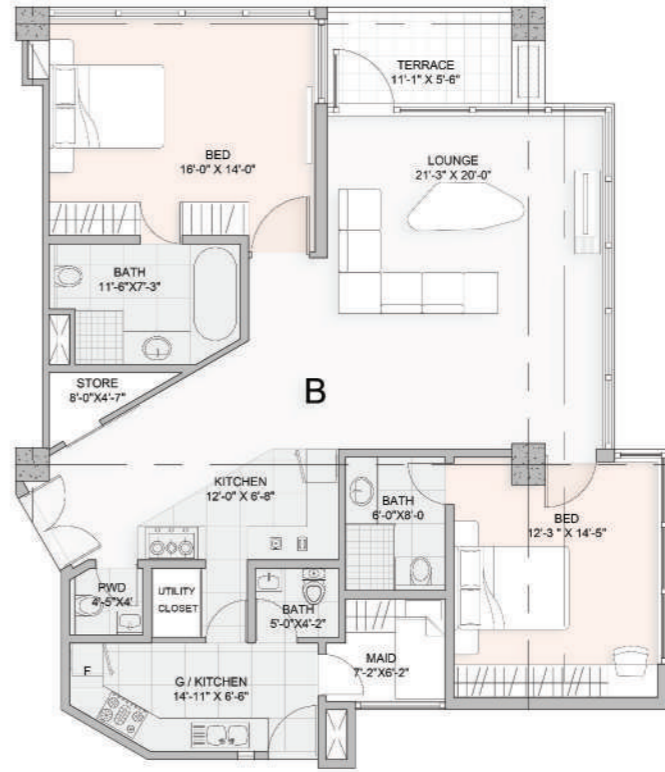


APARTMENT A - SOUTH TOWER.
 AREA = 2316 SQ.FT
 3-Bed Apartment.

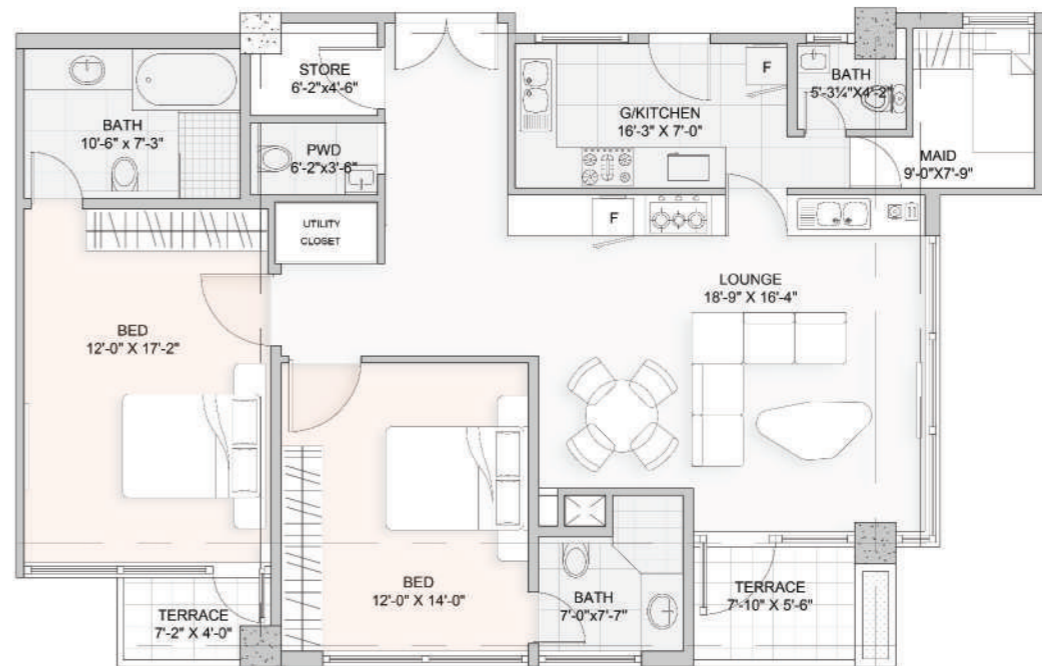
- Apartment Composition.**
- Three Bedroom en Suite.
 - One Master With Private Terrace.
 - Living Room With Dining And Sitting Areas.
 - Fully Furnished Kitchen.
 - Grease Kitchen.
 - Powder Room.
 - Maid's Room.
 - Utility Closet For Washer/dryer.
 - Mid-Sized Store Room.
 - Terrace.



APARTMENT B - SOUTH TOWER.
 AREA = 1530 SQ.FT
 2-Bed Apartment.

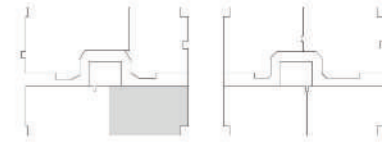


APARTMENT C - SOUTH TOWER.
 AREA = 1411 SQ.FT
 2-Bed Apartment.



Apartment Composition.

- Two Bedroom en Suite.
- One Master Bed.
- Living Room With Dining And Sitting Areas.
- Fully Furnished Kitchen.
- Grease Kitchen.
- Powder Room.
- Maid's Room.
- Utility Closet For Washer/dryer.
- Store Room.
- Terrace.



Apartment Composition.

- Two Bedroom en Suite.
- One Master With Private Terrace.
- Living Room With Dining And Sitting Areas.
- Fully Furnished Kitchen.
- Grease Kitchen.
- Powder Room.
- Maid's Room.
- Utility Closet For Washer/dryer.
- Mid-Sized Store Room.
- Terrace.

Amenities



Security



Power Generator



Laundromat



Basement Parking



Car Wash Area



Prayer Area



Janitorial Services

The Management



Liberty Condominiums will operate the complex on behalf of the residents and owners. This includes all maintenance work on communal areas and all facilities and amenities provided by Gulberg Grove. A monthly management fee will be taken from the residents in this regard. To ensure the exclusivity and peace of Gulberg Grove is uncompromised the management will also be responsible for the screening process of the tenants.

Contact:
jarrar.shah@gmail.com
+923008429678

A PROJECT OF



LIBERTYCONDOMINIUMS